

Connah's Quay Low Carbon Power

Environmental Statement Volume III Figure 8-8: FEED 1 Abated Scenario, Maximum 8-hour Mean CO Process Contribution

Planning Inspectorate Reference: EN010166

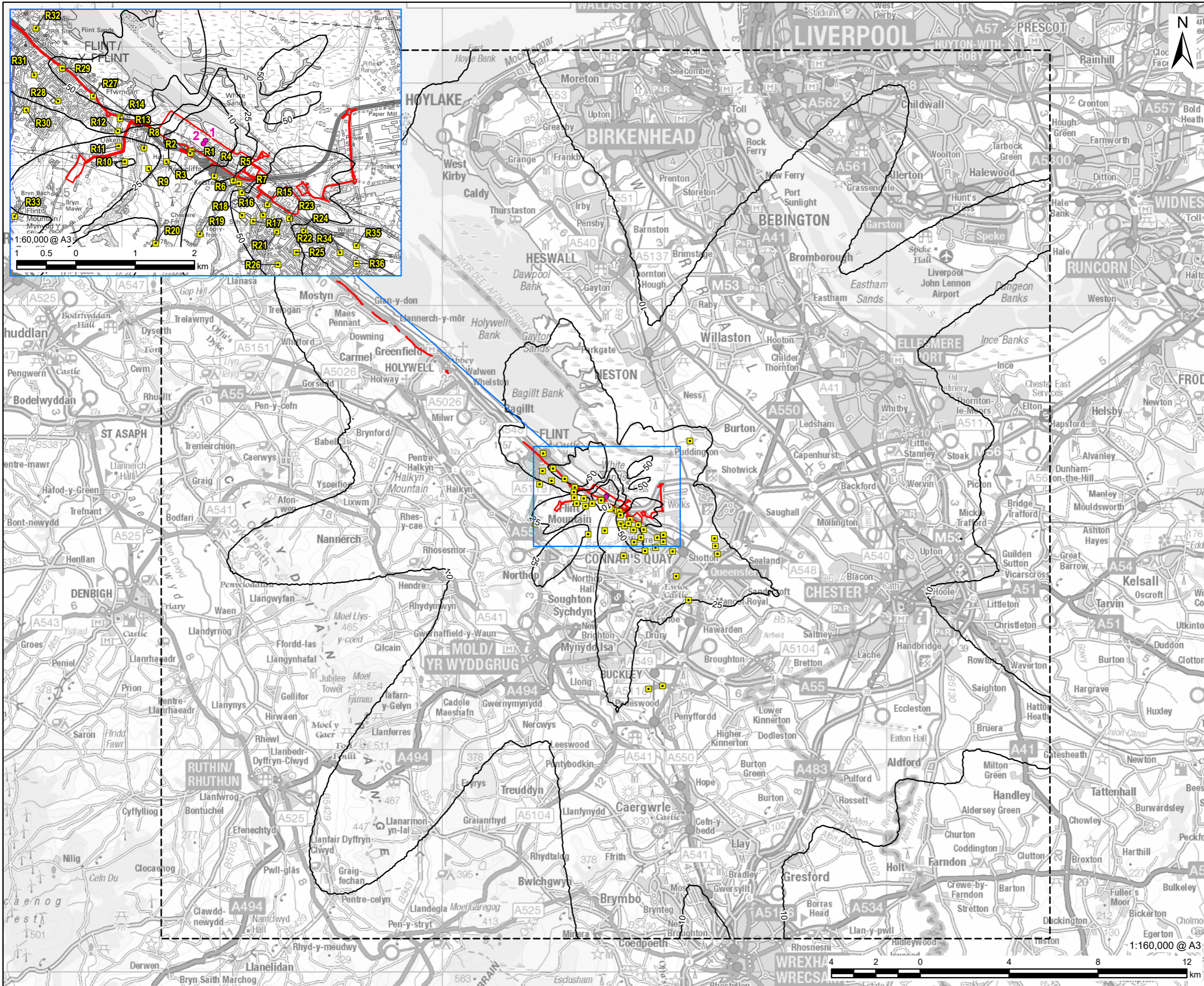
Document Reference: EN010166/APP/6.3

Planning Act 2008 (as amended)

Infrastructure Planning (Applications: Prescribed Forms and Procedure) Regulations
2009 - Regulation 5(2)(a)

Revision 01

March 2026



PROJECT
Connah's Quay Low Carbon Power

CONSULTANT
 AECOM Limited
 The Colmore Building
 Colmore Circus, Queensway
 Birmingham, B4 6AT
 www.aecom.com

- LEGEND**
- Order limits
 - Model Domain
 - Feed 1 - Absorber Stack
 - Human Health Receptor
 - Maximum 8-hour Mean CO Process Contribution ($\mu\text{g}/\text{m}^3$), 100th Percentile of Hourly Averages

NOTES
 © Crown Copyright 2025. All rights reserved.
 Ordnance Survey Licence AC0000808122.
 Contains OS data © Crown copyright 2025.

ISSUE PURPOSE
 Environmental Statement

DATE
 March 2026

PROJECT NUMBER
 60768754

FIGURE TITLE
 FEED 1 Abated Scenario, Maximum 8-hour Mean CO Process Contribution

FIGURE NUMBER
 Figure 8-8

This drawing has been prepared for the use of AECOM's client. It may not be used, modified, reproduced or relied upon by third parties, except as signed by AECOM or as required by law. AECOM accepts no responsibility, and denies any liability whatsoever, to any party that uses or relies on this drawing without AECOM's express written consent. Do not scale this document. All measurements must be obtained from the stated dimensions.